

# Big 4 Holiday Park

## Access Guide

This document is a simple Access Statement – it refers to the general disability access of the parks and sites below. For further, detailed information please call or email us –

+617 5514 4400 and [stay@gcpark.com.au](mailto:stay@gcpark.com.au).

Always ensure you've checked the [Big 4 Gold Coast Holiday Park Website](#) for the latest news and updates.

Overview .....	3
Map .....	4
Arrival and Parking .....	5
Pathways and signage .....	6
Features and Amenities .....	7
Pool area ‘Nibbles’ café and toilet/change facilities .....	7
Playground, basketball court and off-lead dog area .....	8
Camp kitchen .....	9
Amenities block and laundry .....	10
Games Room .....	13
Accommodation .....	14
2-bedroom Accessible Terrace .....	14
2-bedroom Deluxe Accessible Cabin .....	16
Motel Accessible Room .....	18
Getting There .....	20
What to take .....	20
Sensory Guide .....	20



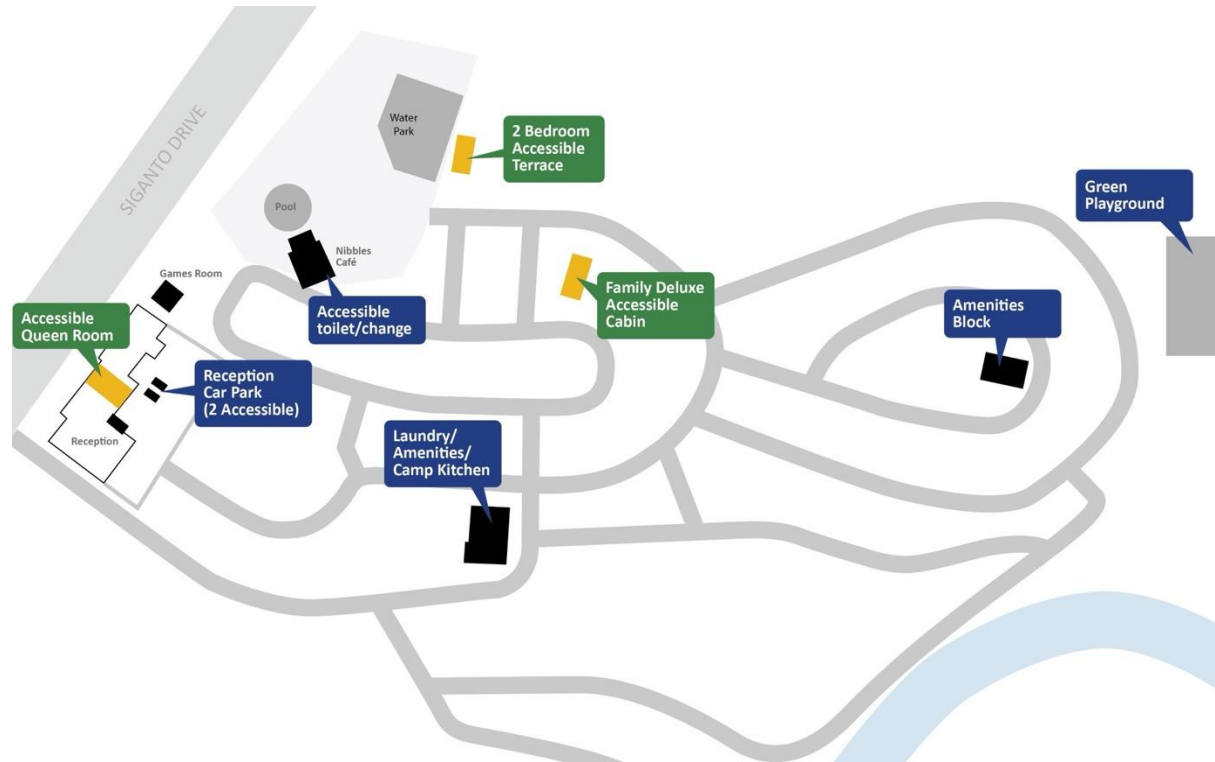
*The Holiday Park includes a water park and pool.*

## Overview

Big 4 Gold Coast Holiday Park is a wonderful place where the whole family can stay on holidays - including pets!

It's a 32-acre park located very close to the theme parks and includes many options for accommodation. There are many things for visitors to do with the park located near the Saltwater Creek and on a site home to animals like koalas and kangaroos. There are a lot of activities you can do using the facilities and amenities on-site. You can enjoy the water park, swimming in the pool, climb on the equipment at the playground.

# Map





*The main reception entry.*



*The entryway from the access road.*

## Arrival and Parking

There is public transport to the Big 4 Gold Coast, with a bus stop just out the front, but the best way to arrive is via private vehicle. Many visitors arrive in their motor homes or in cars bringing their caravans.

The main entryway is from Siganto Drive (which runs alongside Pacific Highway) – from there you'll turn into the park forecourt. It's here you see the reception on the right.

You can arrange for drive through check-in where you don't have to leave your vehicle. Please phone the park to arrange this.

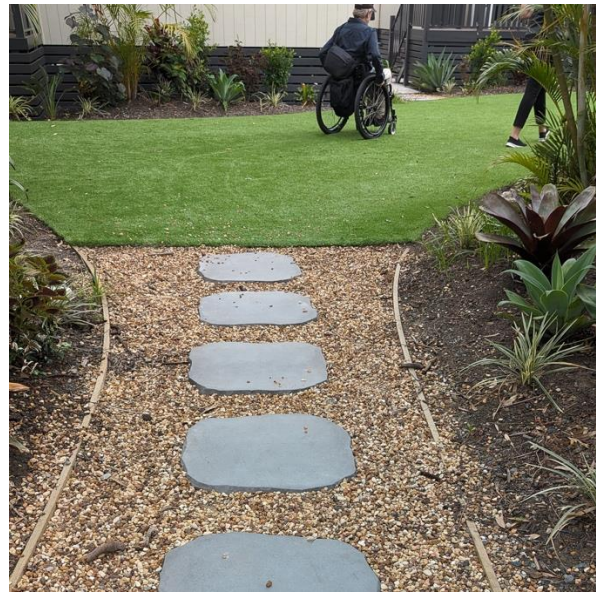
The reception area has a slight step at the front and is well lit. There are car parks at the reception forecourt and 2 more at the motel parking area around to the left. The reception doesn't have a low counter.



## Pathways and signage



*The signage is colourful and descriptive.*



*Most pathways are flat and level.*

Inside the property, the roadways are shared areas – where pedestrian and cars share the road (10km/h limit). The site is very walkable and there are pedal karts to move around in.

The majority of paths throughout the property are flat, level and well defined. The signage system is colourful and clear – the colours indicate a park feature –

**Red is for activities and games.**

**Navy for park amenities.**

**Yellow for accommodation.**

**Light blue for pools and water parks.**

**Green for back of park dog park.**

# Features and Amenities

## Pool area 'Nibbles' café and toilet/change facilities

There is a large resort-style circular pool for visitors to enjoy. The circular pool has cabanas along one side where you can rest in the shade and be close to the pool.

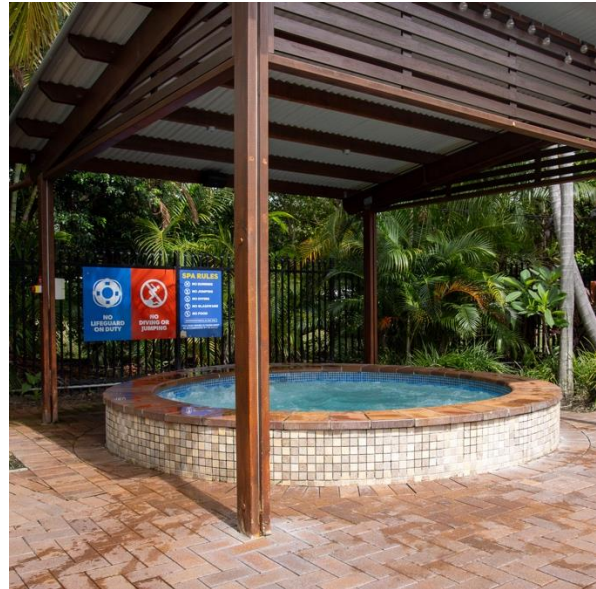
The pool is not made for swimming laps but for cooling off and relaxing. There's a circular spa near the pool and another less deep toddler or kids pool nearby.

There are handrails and steps to enter the main pool – there isn't a ramp. The spa pool is raised from the ground and has a tiled ridge where you might sit before stepping into the pool.

Visitors can access this area by steps or there's a ramp at the side.



*The main pool has steps and a handrail.*



*The spa pool.*

Next to the pool area is an undercover café and eating area– it's called Nibbles. The food here is casual dining and visitors can purchase hamburgers, fish and chips, pizzas, and a range of different food. There are vegetarian and gluten-free options on offer. Nibbles café has a breakfast menu and is available for drinks and main means later in the day. Food can be ordered from the tables through a QR Code for convenience.

Near to nibbles is a toilet and change block. There is an accessible change room with good space a RHS transfer accessible toilet. There isn't a shower installed here.





*The accessible toilet in the bathroom is a right-hand transfer and doesn't have a backrest.*



*The accessible bathroom has a lever-style tap head and automatic hand drier.*

## **Playground, basketball court and off-lead dog area**

In the northeast area of the property there's a new sustainable playground, a basketball court, and a dog exercise yard. The playground is shaded in some areas and is located on a slight hill making the pathways steep in some areas.



*The playground is on an elevated area, making the path flat but quite steep.*



*The basketball court has seating nearby.*



There are swings (including a supported swing), a climbing zone with nets, rocking play equipment and spinning equipment. There's also a kid-friendly zip line or 'double cableway', where visitors can glide along side-by-side on an elevated line.



*The supported swing has a soft-fall surface.*



*The cable line zips along side-by-side.*

There is outdoor seating and shaded seating near the playground. The shaded picnic area requires the use of stairs, but they have a central handrail. Some concrete pathways do not connect seating and picnic tables.

The full-size basketball court is concrete but is not connected to the concrete pathway.

The dog park is the only area at the park where dogs can be off lead. The fenced area is next to the basketball court.

### **Camp kitchen**

The centrally located camp kitchen is a modern, spacious facility open from 6:30am to 9pm. It's a great place to meet, join with friends and family and share a meal.

There is good space in the facility with ample area between the tables and along the kitchen area. The kitchen has three large barbeque plates, multiple microwaves, cook-plates, toasters, and kettles and washing basins. There are fridges and freezers to use, and a TV is mounted on the wall.

There are also USB ports to charge devices and a large colourful fish tank at the centre of the facility. It is a light and bright space with large opening windows. There's also a vending machine with snacks and treats.

There's a stepped entrance from one side and a ramped entrance from the other. The stepped entry doesn't have a handrail and the ramp gradient is mild.



*The kitchen is open most of the day and is bright and airy.*



*The ramped access to the camp kitchen.*

### **Amenities block and laundry**

Located near the camp kitchen is a well-appointed toilet and shower block with a laundry nearby. The male and female toilet blocks contain showers, toilets, and hand basins. There are ten (10) shower cubicles and six (6) toilets with one ambulant cubicle in each block. They have sharps disposals units, hand basins, hand driers and paper towels.

A plant-lined pathway runs east from the camp kitchen up a mild gradient to the toilet block. There is an alternate path from the southern side. The toilet entryway has a large fish tank similar to the one found at the camp kitchen. To the right is the female toilet and to the left the men's.

The amenities are light and bright and open 24-7.

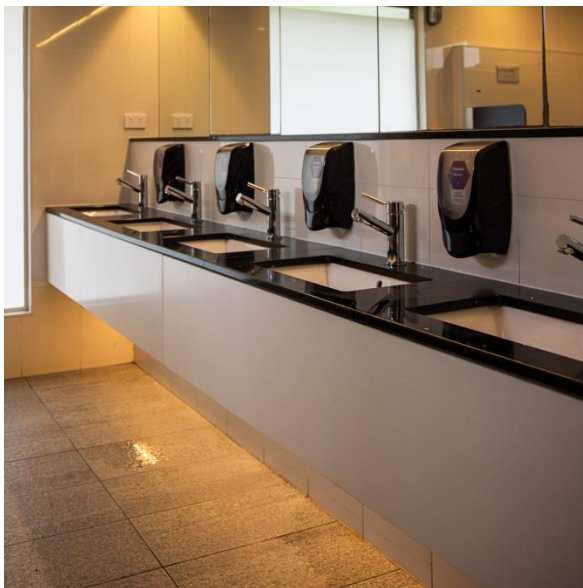




*View from the toilets towards the camp kitchen.*



*There is seating at the entry area to the amenities block.*



*The hand basins are lever style, and the building is bright and modern.*



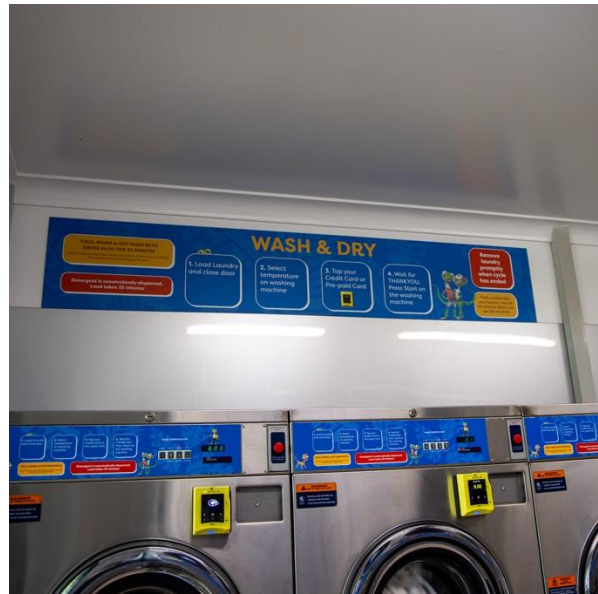
*There isn't an accessible shower in the main block – it is within the accessible bathroom block (which requires a code).*

Near the laundry is an accessible bathroom with shower – visitors are required to ask at reception for the keycode.

Located near the toilet block is the laundry block. The laundry has large capacity washing machines and clothes driers. Visitors can use credit and debit cards to pay, and the detergent and softener are free. The controls do not have raised lettering or Braille and the EFTOS card sensor is at a height reachable while seated.



*The accessible bathroom/toilet has a code lock.*



*The washing machines and clothes driers use credit and debit card payments.*



## Games Room

The park has a games room with electronic entertainment in the form of arcade games. Some of these require players sit and other they can stand. There are driving games, ball games, games of chance and others. There is a small step into the games room and a ramped approach from the main accommodation areas.



*The room has a range of equipment and games.*



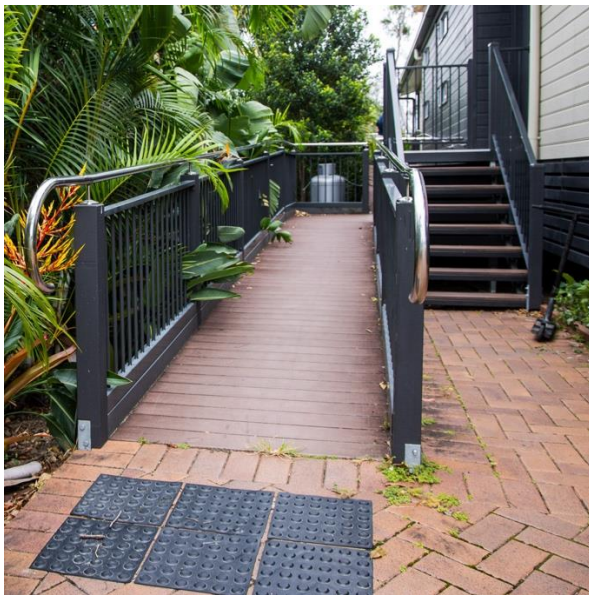
*Some machines have good room to step-into and out of games.*

# Accommodation

## 2-bedroom Accessible Terrace



*The accessible terrace has a wide lounge room and generous living area.*



*The terrace has ramped access to a balcony.*



*The accessible toilet is right hand transfer with grab rails.*

The accessible terrace accommodation is a great way to stay at the park. It sleeps 6 with 1 queen bed and 2 bunk beds. The terrace has ramped access (approximately 10m with flat landing halfway) and an accessible toilet and roll-in shower.

Through the cabin's main door (103mm W) there's a spacious living area with a fully self-contained kitchen featuring a dishwasher, microwave, fridge freezer, dining table and chairs.

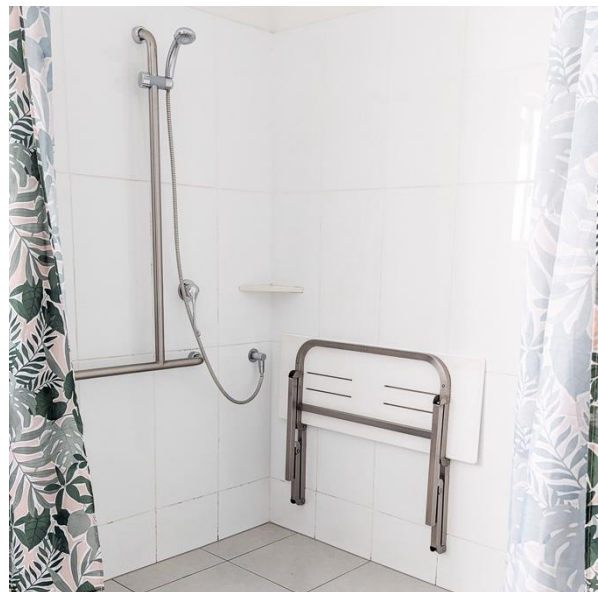
The living area has a flat floor with a couch and wall mounted TV.

Through the door into the bathroom (885mm W), there is leg clearance under the hand basin (698mm H) which has a lever style tap head. The toilet has a contrasting toilets seat and grab rail on the right-hand side (820mm H).

The terrace accommodation is dog friendly and located directly next to the water park which is close to the games room and reception.



*The accessible terrace kitchen is fully self-contained.*



*The terrace bathroom has a roll in shower with a fold-down shower seat.*



## 2-bedroom Deluxe Accessible Cabin



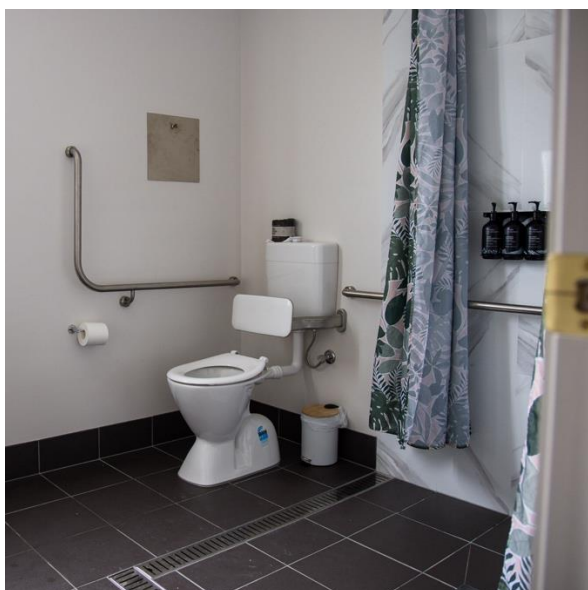
*The 2-bedroom Deluxe Accessible Cabin has good circulation space and a modern design.*

The deluxe cabin is another great option for staying at our Park. The large cabin sleeps 6 (either 1 x king size double (2) or two singles (2) + 2 x Bunk Beds (4)).

Through the main door (1030mm W), there's an open plan layout with a balcony, large wall-mounted TV and long, low couch in the spacious living area.

The floor is flat floorboards and there is a well-equipped modern kitchen with fridge/freezer, cooktop, microwave, and cooking utensils.





*The accessible bathroom has grab rails across the side and back of the toilet pan.*



*The terrace bathroom has a roll in shower with a fold-down shower seat.*

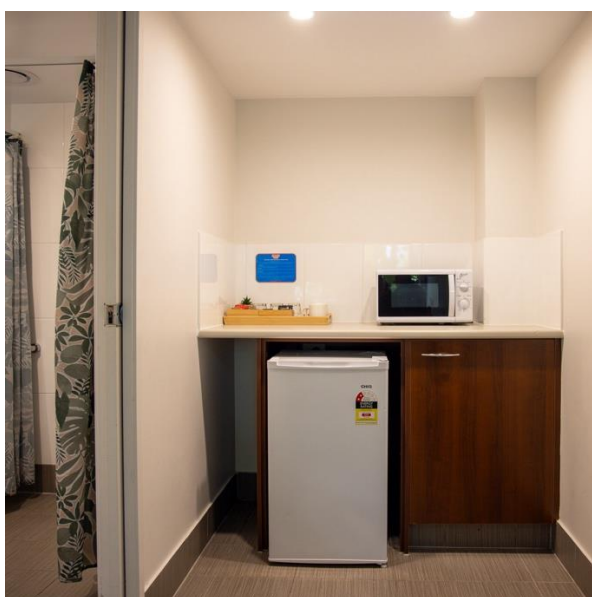
Through the bathroom door (860mm W) visitors will find an accessible design with a right-hand side transfer toilet pan with grab rails. The hand basin has good leg clearance (618mm H) and a lever-style tap head.

## Motel Accessible Room

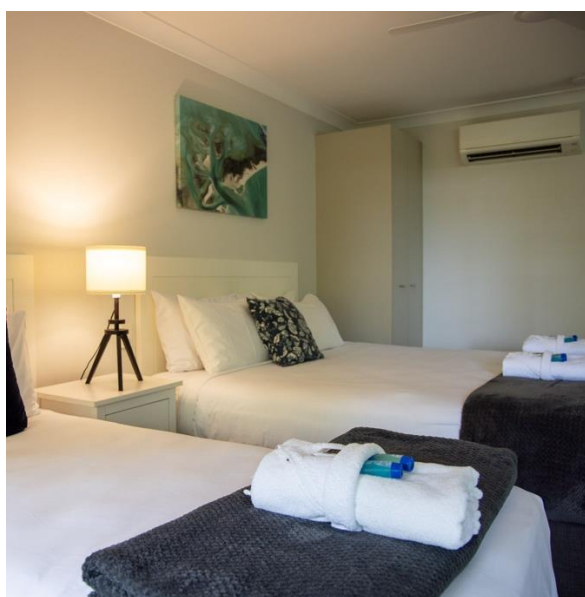


*The Motel Accessible Room is close to reception and contains an accessible bathroom.*

Two Motel rooms offer a comfortable stay, close to the reception area and water park. There are multiple configurations available, sleeping up to 3 people. The bed has 100mm space under the frame. The room has an interconnecting room which can be booked for bigger groups. The room has a reverse cycle air-conditioner and ceiling fan.

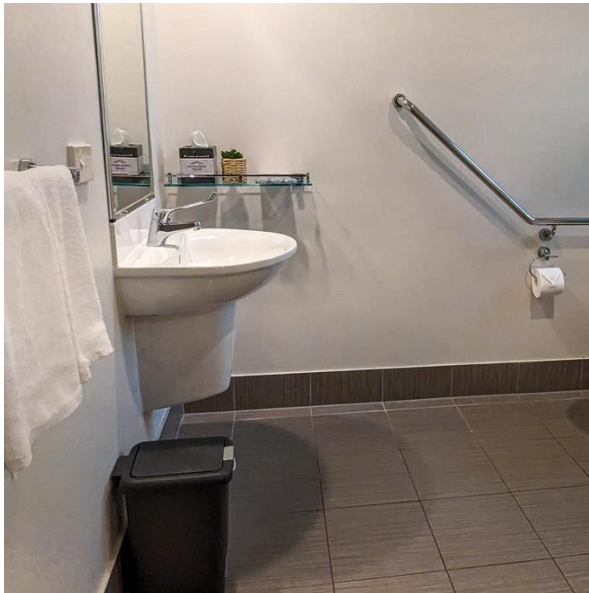


*The accessible motel room has basic kitchen elements – cooking essentials are available on request for use at the camp kitchen.*



*The motel room has a queen size bed and single bed, air-conditioning, table with drawers and bedside lamp.*

There is a small bar fridge, microwave, and kettle. There is a large flat screen TV and free WIFI available. There is not a lot of room to manoeuvre – especially for motorised wheelchair users.



*The accessible bathroom has leg clearance under the basin and a lever-style tap head.*

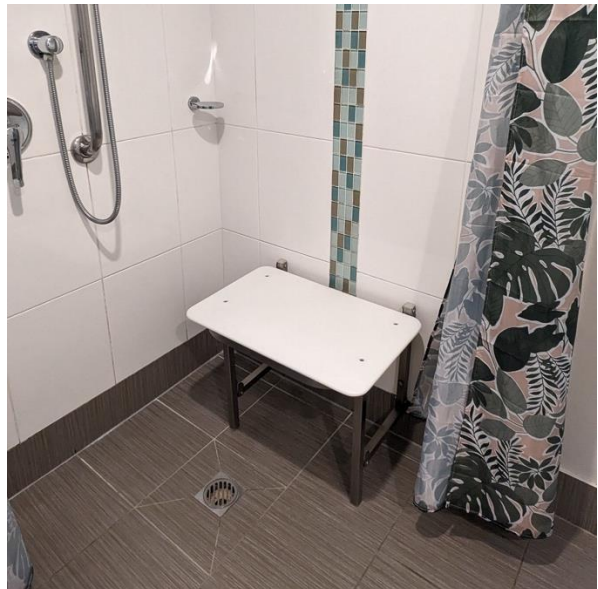


*The toilet has a right-hand-side transfer with grab rails along the wall.*

Through the bathroom door (840mm W) is a good-sized accessible bathroom featuring a toilet with grabrails and a rolling shower with a fold down seat.



*There is a height-adjustable showerhead.*



*There is a roll-in shower and fold down seat.*

# Getting There

Big 4 Gold Coast is just 25-minutes by car from the city of Gold Coast and 40-minutes' drive from the Gold Coast airport. We're located about 45-minutes' drive from Brisbane CBD. There are public transport options that will bring you close to the park but the easiest way to arrive is via private car.

# What to take

Make sure you take;

- Protective clothing, sunscreen, hat, and sunglasses to protect yourself from the sun.
- Swimming trunks for the water park and pool.
- Drinking water to stay hydrated.
- Suitable shoes for walking if you wish.

# Sensory Guide

Feel	Sounds	Sights	Smells
Different ground surfaces	People	Caravans and campervans	Food being cooked
Shared personal space	Children playing	Aquariums	Pool cleaner
Weather; wind, rain, heat and humidity	Dogs	Tiki torches (flames) at the pool	Nature
Excitement in the waterpark	Birds	Birds and animals	Animals
	Running water/splashing in the waterpark	Trees and plants	Plants and flowers

*Conditions are always changing in holiday parks, while every care has been made to ensure the information here is accurate park management is not liable for any accidents, injuries, or losses incurred during your visit. Visitors assume responsibility for their own safety and well-being.*