

Big 4 Holiday Park

Access Guide



This document is a simple Access Statement – it refers to the general disability access of the parks and sites below. For further, detailed information please call or email us –

+617 5514 4400 and stay@gcpark.com.au.

Always ensure you've checked the [Big 4 Gold Coast Holiday Park Website](#) for the latest news and updates.

Overview	3
Map	4
Arrival and Parking	5
Pathways and signage	5
Features and Amenities	7
Pool area ‘Nibbles’ café and toilet/change facilities	7
Playground, basketball court and off-lead dog area	8
Camp kitchen	10
Amenities block and laundry	11
Games Room	13
Accommodation	14
2-bedroom Accessible Terrace	14
2-bedroom Deluxe Accessible Cabin	16
Motel Accessible Room	17
Getting There	20
What to take	20
Sensory Guide	20



The Holiday Park includes a water park and pool.

Overview

BIG4 Gold Coast Holiday Park offers a relaxed, family-friendly holiday experience with accommodation options for a wide range of guests, including those travelling with pets.

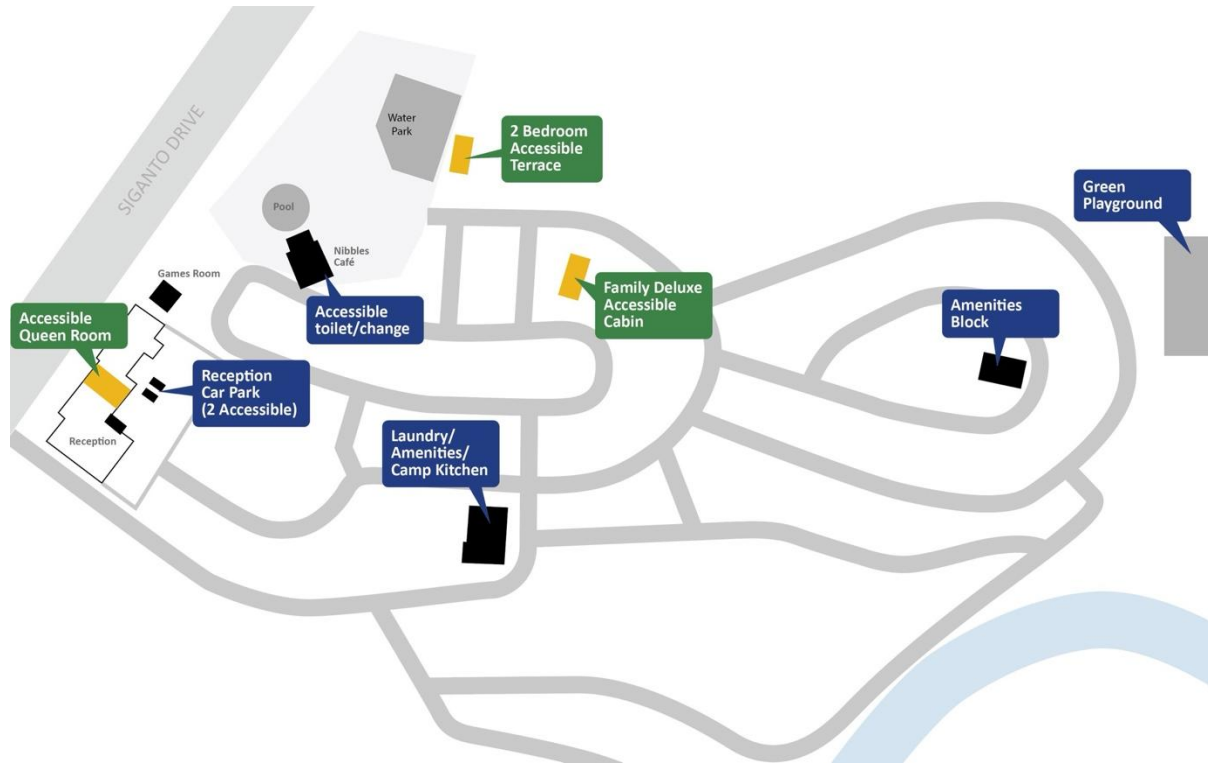
Location and Setting

The park is set on 32 acres close to the Gold Coast theme parks. It is located near Saltwater Creek and sits within a natural environment where guests may see wildlife such as koalas and kangaroos.

Facilities and Activities

Guests can enjoy a variety of on-site facilities and activities, including the water park, swimming pool and playground equipment.

Map





The main reception entry.



The entryway from the access road.

Arrival and Parking

The easiest way to arrive at BIG4 Gold Coast Holiday Park is by private vehicle. Many guests arrive in motorhomes, cars, or cars towing caravans. Public transport is also available, with a bus stop located near the front of the park.

Entry to the Park

The main entrance is from Siganto Drive, which runs alongside the Pacific Highway. From Siganto Drive, turn into the park forecourt. Reception is located on the left-hand side as you enter.

Check-in Options

Drive-through check-in can be arranged so guests do not need to leave their vehicle. Please phone the park before arrival to organise this service.

Reception and Parking

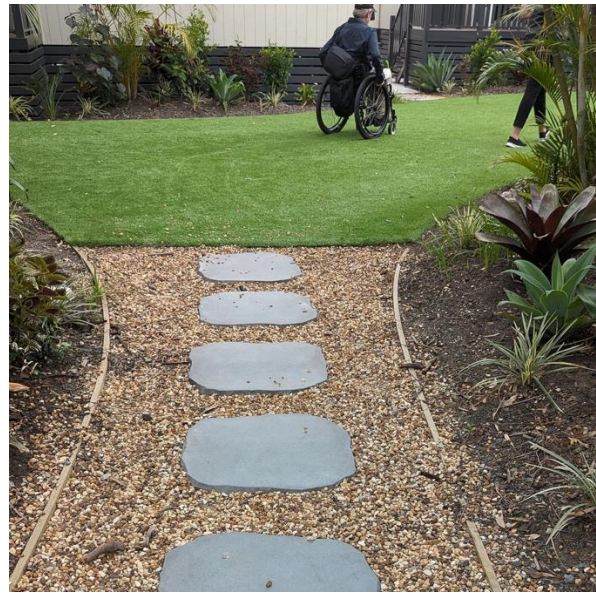
The reception area is well lit and has a slight step at the front entrance. Please note that reception does not have a low counter.

Parking is available in the reception forecourt. Two additional car parks are located around to the left in the motel parking area.

Pathways and signage



The signage is colourful and descriptive.



Most pathways a flat and level.

Roadways and Getting Around

Roadways within the property are shared zones for pedestrians and vehicles. The speed limit is 10 km/h throughout these shared areas.

The park is generally easy to move around, with pedal karts available for guests who wish to use them.

Pathways

Most pathways throughout the property are flat, level, and well defined.

Colour-coded Signage

The signage system is colourful and easy to follow. Each colour identifies a different park feature:

- **Red:** activities and games
- **Navy:** park amenities
- **Yellow:** accommodation
- **Light blue:** pools and water parks
- **Green:** back-of-park dog park

Features and Amenities

Pool Area, Nibbles Café and Toilet/Change Facilities

Pool Area

The park has a large resort-style circular pool designed for cooling off and relaxing rather than lap swimming. Cabanas are located along one side of the pool, providing shaded seating close to the water.

A circular spa is located near the main pool, with a shallower toddler or children's pool nearby.

Pool Access

The main pool is accessed by steps with handrails. There is no ramp into the pool.

The spa pool is raised from ground level and has a tiled edge where guests may sit before stepping into the water. The pool area can be reached by steps, with a ramp also available at the side.

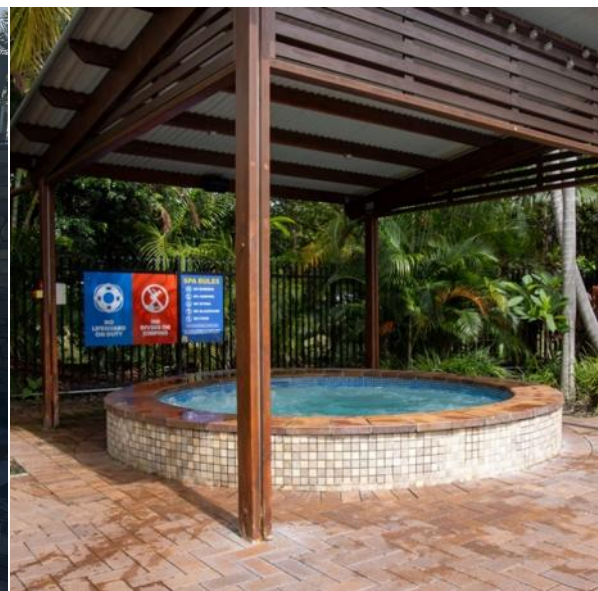
Nibbles Café

Next to the pool area is an undercover café and eating area called Nibbles. It offers casual dining, including hamburgers, fish and chips, pizzas and other meal options, with vegetarian and gluten-free choices available.

Nibbles Cafe has a breakfast menu and serves drinks and main meals later in the day. Guests can order from their table using a QR code.



The main pool has steps and a handrail.

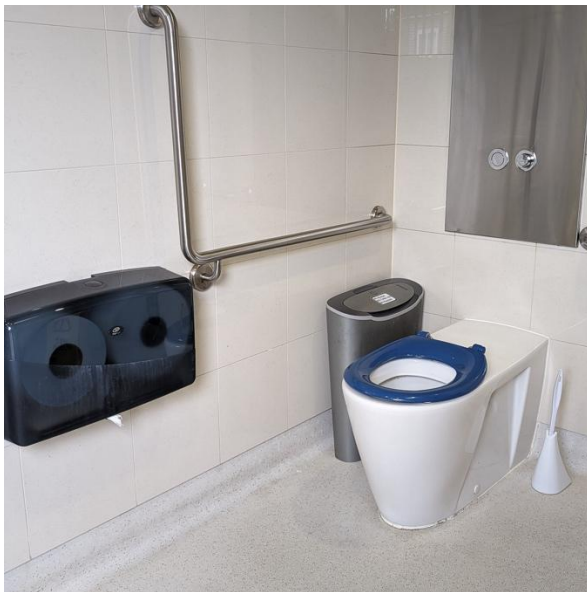


The spa pool.

Toilet and Change Facilities

A toilet and change block is located near Nibbles Café. The facility includes an accessible change room with good circulation space and a right-hand-side transfer accessible toilet.

- Accessible change room with good circulation space
- Right-hand-side transfer accessible toilet
- No shower installed in this facility



The accessible toilet in the bathroom is a right-hand transfer and doesn't have a backrest.



The accessible bathroom has a lever-style tap head and automatic hand drier.

Playground, Basketball Court and Off-lead Dog Area

The northeast area of the property includes a sustainable playground, basketball court and fenced dog exercise yard. This area provides a mix of active play, sport and off-lead space for dogs.

Access and Location

The playground is partly shaded and located on a slight hill. Some pathways in this area are steep, so guests may need to take extra care when moving between the playground, basketball court and dog exercise yard.



The playground is on an elevated area, making the path flat but quite steep.



The basketball court has seating nearby.

Play Equipment

The playground includes a range of equipment for different types of play, including climbing, swinging, rocking and spinning activities.

- Swings, including a supported swing
- Climbing zone with nets
- Rocking play equipment
- Spinning equipment
- Kid-friendly zip line, also known as a double cableway, where visitors can glide side by side on an elevated line



The supported swing has a soft-fall surface.



The cable line zips along side-by-side.

Seating and Picnic Areas

Outdoor seating and shaded seating are available near the playground. The shaded picnic area is accessed by stairs with a central handrail.

Some concrete pathways do not connect directly to the seating and picnic tables, so guests may need to move across different surfaces to reach these areas.

Basketball Court

The full-size basketball court has a concrete surface. It is not directly connected to the concrete pathway.

Off-lead Dog Area

The fenced dog park is next to the basketball court. This is the only area of the park where dogs may be off lead.

Camp kitchen

The centrally located camp kitchen is a modern, spacious facility open from 6:30 am to 9:00 pm. It is a welcoming place for guests to meet, gather with friends and family, and share a meal.

Kitchen Facilities

The facility has generous space between tables and along the kitchen area. Equipment includes:

- Three large barbecue plates
- Microwaves, cookplates, toasters and kettles
- Washing basins
- Fridges and freezers
- Wall-mounted TV

Additional Features

The camp kitchen also includes USB charging ports, a vending machine with snacks and treats, and a large colourful fish tank in the centre of the facility. Large opening windows make the space feel light, bright and airy.

Camp Kitchen Access

The camp kitchen has a stepped entrance on one side and a ramped entrance on the other. The stepped entry does not have a handrail, and the ramp has a mild gradient.



The kitchen is open most of the day and is bright and airy.



The ramped access to the camp kitchen.

Amenities Block and Laundry

The amenities block is located near the camp kitchen and includes male and female toilet and shower facilities, with a laundry nearby.

Toilet and Shower Facilities

Each toilet block includes showers, toilets and hand basins. Facilities include:

- Ten shower cubicles
- Six toilets
- One ambulant cubicle in each block
- Sharps disposal units
- Hand basins, hand driers and paper towels

Access and Entry

A plant-lined pathway runs east from the camp kitchen to the amenities block, with a mild gradient. An alternative path is available from the southern side.

At the entryway, guests will find a large fish tank similar to the one in the camp kitchen. The female toilets are located to the right, and the men's toilets are located to the left.

Opening Hours and General Features

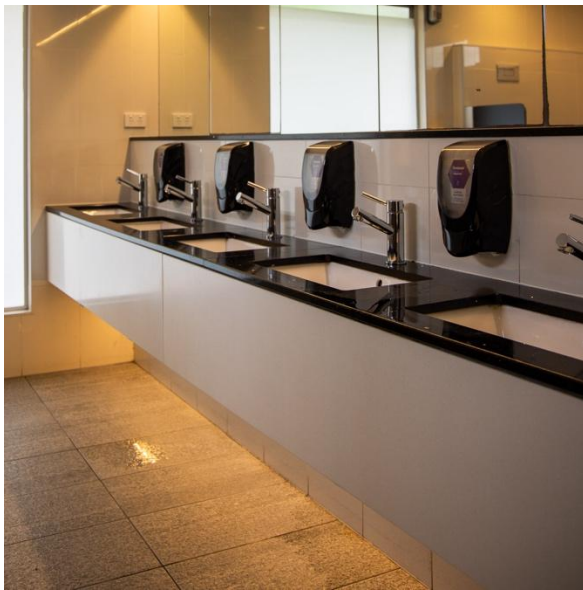
The amenities block is light, bright and open 24 hours a day, seven days a week.



View from the toilets towards the camp kitchen.



There is seating at the entry area to the amenities block.



The hand basins are lever style, and the building is bright and modern.



There isn't an accessible shower in the main block – it is within the accessible bathroom block (which requires a code).

Near the laundry is an accessible bathroom with shower – visitors are required to ask at reception for the keycode.

Located near the toilet block is the laundry block. The laundry has large capacity washing machines and clothes driers. Visitors can use credit and debit cards to pay, and the detergent and softener are free. The controls do not have raised lettering or Braille and the EFTOS card sensor is at a height reachable while seated.



The accessible bathroom/toilet has a code lock.



The washing machines and clothes driers use credit and debit card payments.

Games Room

The park has a games room with electronic entertainment in the form of arcade games. Some of these require players sit and other they can stand. There are driving games, ball games, games of chance and others. There is a small step into the games room and a ramped approach from the main accommodation areas.



The room has a range of equipment and games.



Some machines have good room to step-into and out of games.

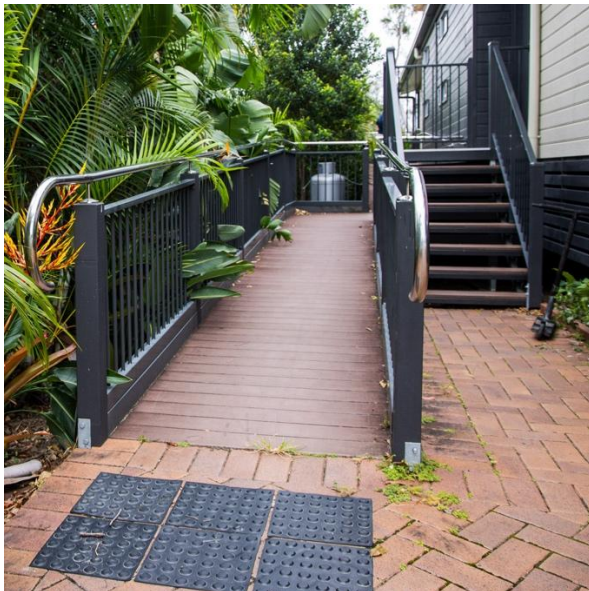
Accommodation

2-bedroom Accessible Terrace

The 2-bedroom Accessible Terrace is a comfortable, dog-friendly accommodation option located next to the water park and close to the games room and reception.



The accessible terrace has a wide lounge room and generous living area.



The terrace has ramped access to a balcony.



The accessible toilet is right hand transfer with grab rails.

Sleeping and Access

The terrace sleeps up to six guests, with one queen bed and two bunk beds. Access to the terrace is via a ramp of approximately 10 metres, with a flat landing halfway along the ramp.

Living Area and Kitchen

The main door is 103 mm wide and opens into a spacious living area with flat flooring, a couch and a wall-mounted TV.

The fully self-contained kitchen includes a dishwasher, microwave, fridge-freezer, dining table and chairs.

Bathroom Features

The bathroom door is 885 mm wide. The bathroom includes an accessible toilet and roll-in shower.

- Leg clearance under the hand basin: 698 mm high
- Lever-style tap head
- Contrasting toilet seat
- Right-hand-side grab rail: 820 mm high



The accessible terrace kitchen is fully self-contained.



The terrace bathroom has a roll in shower with a fold-down shower seat.

2-bedroom Deluxe Accessible Cabin

The 2-bedroom Deluxe Accessible Cabin is a spacious and modern accommodation option for guests staying at the park.



The 2-bedroom Deluxe Accessible Cabin has good circulation space and a modern design.

Sleeping Arrangements

The cabin sleeps up to six guests. Bedding options include either one king-size bed or two single beds, plus two bunk beds.

Living Area and Entry

The main door is 1030 mm wide and opens into an open-plan living area with flat floorboards, a balcony, large wall-mounted TV and long, low couch.

Kitchen

The modern kitchen is well equipped and includes a fridge-freezer, cooktop, microwave and cooking utensils

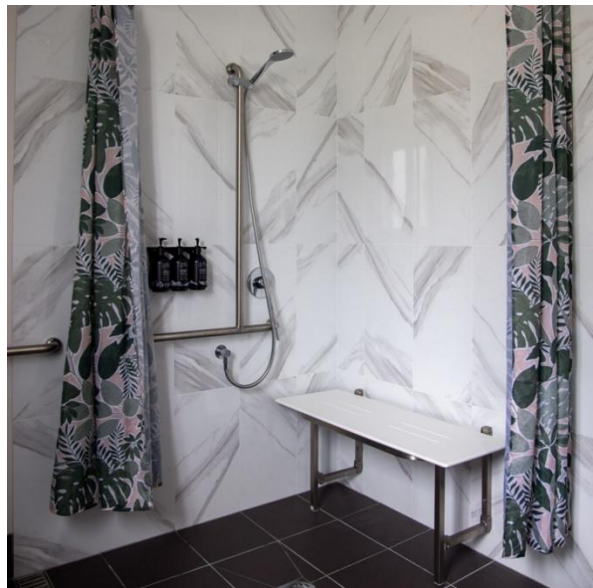
Bathroom Access and Features

The bathroom is designed for accessible use and is reached through an 860 mm-wide doorway.

- Right-hand-side transfer toilet pan with grab rails
- Good leg clearance under the hand basin: 618 mm high
- Lever-style tap head



The accessible bathroom has grab rails across the side and back of the toilet pan.



The bathroom has a roll in shower with a fold-down shower seat.

Motel Accessible Room



The Motel Accessible Room is close to reception and contains an accessible bathroom.

The Motel Accessible Rooms provide a comfortable option for guests wanting to stay close to reception and the water park.

Room Options and Sleeping Arrangements

There are two accessible motel rooms available. Bedding configurations vary and can sleep up to three guests.

The bed frame provides 100 mm of clearance underneath. An interconnecting room may also be booked for larger groups, subject to availability.

Comfort Features

Each room includes a reverse-cycle air-conditioner and ceiling fan.



The accessible motel room has basic kitchen elements – cooking essentials are available on request for use at the camp kitchen.



The motel room has a queen size bed and single bed, air-conditioning, table with drawers and bedside lamp.

In-room Features and Manoeuvring Space

Each Motel Accessible Room includes the following in-room features:

- Small bar fridge
- Microwave
- Kettle
- Large flat-screen TV
- Free Wi-Fi

Please note that internal manoeuvring space is limited, particularly for guests using motorised wheelchairs.



The accessible bathroom has leg clearance under the basin and a lever-style tap head.



The toilet has a right-hand-side transfer with grab rails along the wall.

Bathroom Access and Features

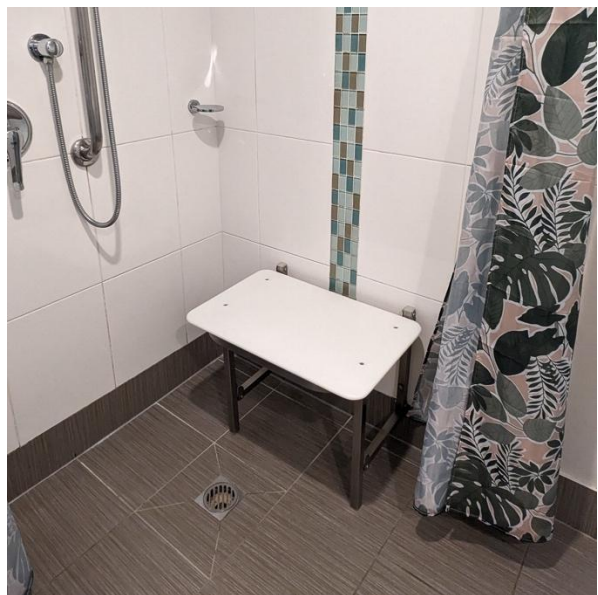
The accessible bathroom is reached through an 840 mm-wide doorway and provides good internal space.

Key features include:

- Toilet with grab rails
- Roll-in shower
- Fold-down shower seat



There is a height-adjustable showerhead.



There is a roll-in shower and fold down seat.

Getting There

BIG4 Gold Coast Holiday Park is approximately 25 minutes by car from central Gold Coast, 40 minutes from Gold Coast Airport and 45 minutes from Brisbane CBD. Public transport options are available nearby; however, travelling by private vehicle is generally the easiest way to reach the park.

What to take

We recommend bringing the following items for a comfortable visit:

- Sun protection, including protective clothing, sunscreen, a hat and sunglasses
- Swimwear for the water park and pool
- Drinking water to help stay hydrated
- Comfortable shoes for walking around the park

Sensory Guide

Feel	Sounds	Sights	Smells
Different ground surfaces	People	Caravans and campervans	Food being cooked
Shared personal space	Children playing	Aquariums	Pool cleaning products
Weather conditions, including wind, rain, heat and humidity	Dogs	Tiki torches and flames near the pool	Nature
Excitement in the waterpark	Birds	Birds and animals	Animals
	Running water and splashing in the water park	Trees and plants	Plants and flowers

Conditions in holiday parks can change. While every care has been taken to ensure this information is accurate, park management is not liable for accidents, injuries or losses incurred during your visit. Visitors are responsible for their own safety and wellbeing.